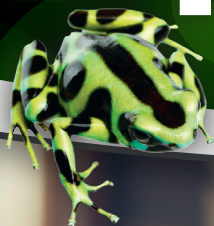


# RapidClean

National Supply Solutions

NATIONAL STRENGTH - LOCAL SERVICE



## Easy Dispense Garbage Bags

CODE	SIZE	COLOUR	DESCRIPTION	PACKET QTY	CARTON QTY
RLDBIN54M	54L	Black	Medium Duty LDPE Garbage Bin Liners	50	250
RLDBIN73AP	73L	Black	All Purpose LDPE Garbage Bin Liners	50	250
RLDBIN73M	73L	Black	Medium Duty LDPE Garbage Bin Liners	50	250
RLDBIN73H	73L	Black	Heavy Duty LDPE Garbage Bin Liners	25	250
RLDBIN73RH	73L	Black	Heavy Duty LDPE Bin Liner Bulk Roll	25	250
RLDBIN82H	82L	Black	Heavy Duty LDPE Garbage Bin Liners	25	250
RLDBIN82E	82L	Black	Extra Heavy Duty LDPE Garbage Bin Liners	25	200
RLDBIN120H	120L	Black	Heavy Duty LDPE Garbage Bin Liners	25	100
RLDBIN240AP	240L	Black	All Purpose LDPE Garbage Bin Liners	25	100
RLDBIN240H	240L	Black	Heavy Duty LDPE Garbage Bin Liners	25	100



## Kitchen Tidy Liner Rolls

CODE	SIZE	COLOUR	DESCRIPTION	ROLL QTY	CARTON QTY
R-KTS	18L	White	Rapid Small Kitchen Tidy Liner Roll	50	1,000
R-KTM	27L	White	Rapid Medium Kitchen Tidy Liner Roll	50	1,000
R-KTL	36L	White	Rapid Large Kitchen Tidy Liner Roll	50	1,000

[WWW.RAPIDCLEAN.COM.AU](http://WWW.RAPIDCLEAN.COM.AU)

Unit 3, 76 Regentville Road, Penrith, NSW 2750 | 02 4721 1993 | [sales@rapidclean.com.au](mailto:sales@rapidclean.com.au)

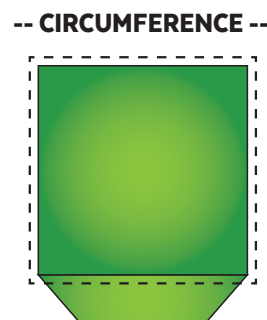
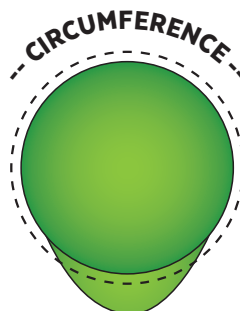


## How To Choose The Right Garbage Bags

- BAGS AREN'T BAGS** - Some bags are made from poor quality materials and have weak seals that can easily split. Choose a bag from a quality company featuring a star seal which will provide the strongest possible seal. Make sure your supplier is one that backs their products and is preferably Australian owned.
- FIND THE RIGHT SIZE -**
  - Width measurement: Measure the circumference of the bin and divide it by half.
  - Length measurement: Measure the height of the bin and then add about 100mm for overhang which will keep the bin liner from falling inside and allow you to tie the bag up when removing.
- CHOOSE THE RIGHT GRADE** - There are different grades of garbage bags for different jobs; if you choose one that is too thin it might break and if you choose one that is too thick you will be wasting money. Following is a basic guide to help you choose but sometimes there is a bit of trial and error to find the perfect garbage bag. Our experts at RapidClean stores will help you make the right selection.



**STAR SEAL**



GRADE	DESCRIPTION
All Purpose - AP	Is our general use garbage bag; it is a good fit for contract cleaners and medium waste with no sharp edges.
Medium - M	As the name indicates is designed for all mediums of waste and in areas where AP may not be suitable.
Heavy Duty - H	Is a thicker and higher grade with good puncture resistance for use in areas of wet waste.
Extra Heavy Duty - E	Is the strongest bag we have. It is tough with extra high puncture resistance perfect for use in hotels, restaurants and clubs with wet waste and broken bottles. Also great in industrial situations with heavy waste.